

VOLTAGE AND FUSE SELECTION

Part No. BBF-105943 Rev. B

WARNING

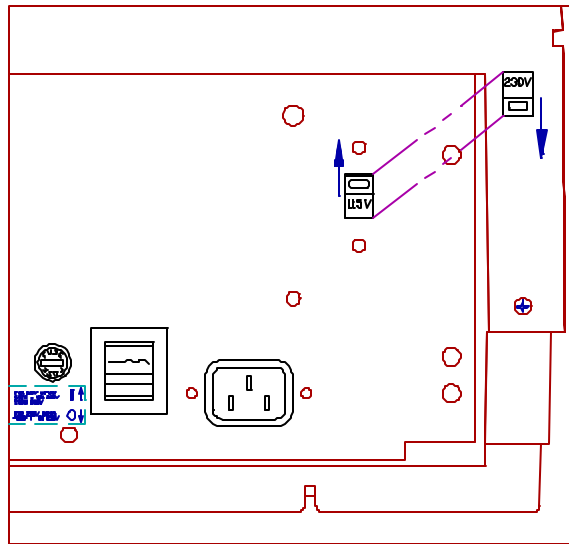
Before beginning the procedure below, make certain the printer is disconnected from the AC power source.

CAUTION

The printer must have the correct line fuse installed for the selected input voltage.

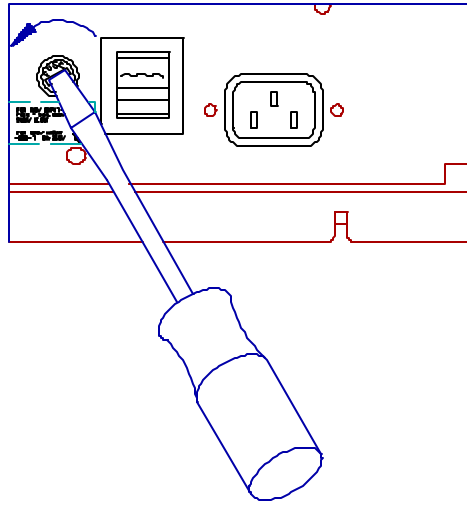
| <u>Input Voltage</u> | <u>Fuse Rating</u> |
|----------------------|--------------------|
| 115 Volts | 1.5 amps |
| 230 Volts | 0.8 amps |

1. The power selector switch is located on the electronic chassis as shown. Set the power selector switch to the desired setting.



2. Use standard bit screwdriver to turn the fuse carrier counterclockwise 1/4 turn. Remove the fuse

carrier and fuse presently in the printer.



3. Make certain kit are correct for the voltage you have selected.

the fuse and fuse carrier supplied in this

| <u>Power Selector Switch Setting</u> | <u>Color of the Fuse Carrier</u> | <u>Fuse Rating</u> |
|--|--------------------------------------|--------------------|
| 115 volts | gray | 1.5 amps |
| 230 volts | black | 0.8 amps |

4. Install the fuse and fuse carrier supplied in this kit.